



# Orwell Mansions, Bonchurch Road, Notting Hill, W10

Asking Price: £550,000

 Benham  
& Reeves



# Orwell Mansions, Bonchurch Road, Notting Hill, W10

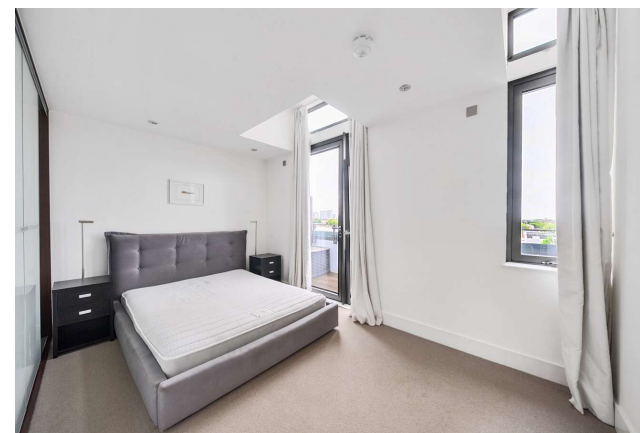
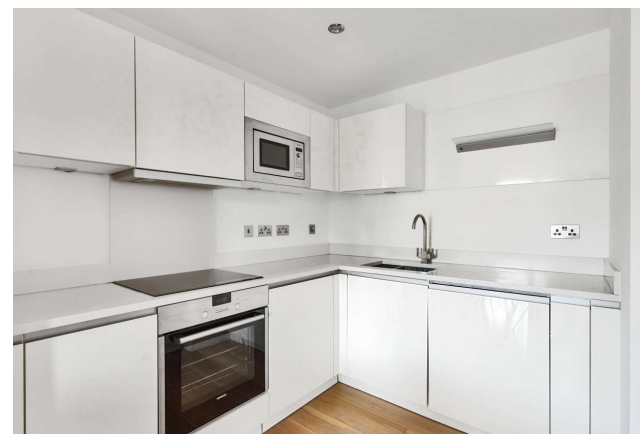
 1 Bedroom (s)  1 Bathroom (s)  Leasehold

An exquisite one bedroom apartment situated on the top floor, within the highly sought-after Portobello Square development.

The layout offers approximately 566 square feet of spacious and well-designed living space, featuring a wonderfully illuminated kitchen/reception room that opens onto a generous balcony boasting expansive views. The contemporary essence of the construction is maintained through the inclusion of wooden flooring, seamlessly integrated Siemens appliances, and elegant chrome fixtures. The well-proportioned bedroom features built-in wardrobes and offers direct access to an additional balcony, further enhancing the seamless indoor-outdoor living experience. The bathroom is elegantly tiled from floor to ceiling, featuring a bath with an overhead shower, a heated towel rail, and ample storage space.

Portobello Square has swiftly gained recognition as one of the most coveted addresses in the area, with an array of boutiques, cafes, and dining options right at its doorstep. Exceptional connections to all parts of London and beyond are easily accessible. This development is discreetly positioned behind the trendy Golborne Road and adjacent to the world-renowned Portobello Road.

With three nearby tube stations and a well-connected bus network, Bonchurch Road offers swift links to the heart of London.

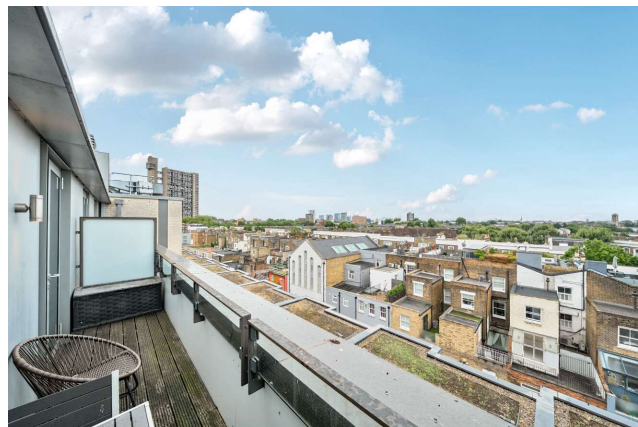


# Orwell Mansions, Bonchurch Road, Notting Hill, W10



## Property Features:

- One Bedroom
- One Bathroom
- 566 Square Feet (Approx.)
- 4th Floor
- Top Floor Apartment
- Two Balconies
- Modern Interiors
- Ladbroke Grove Underground (Zone 2)

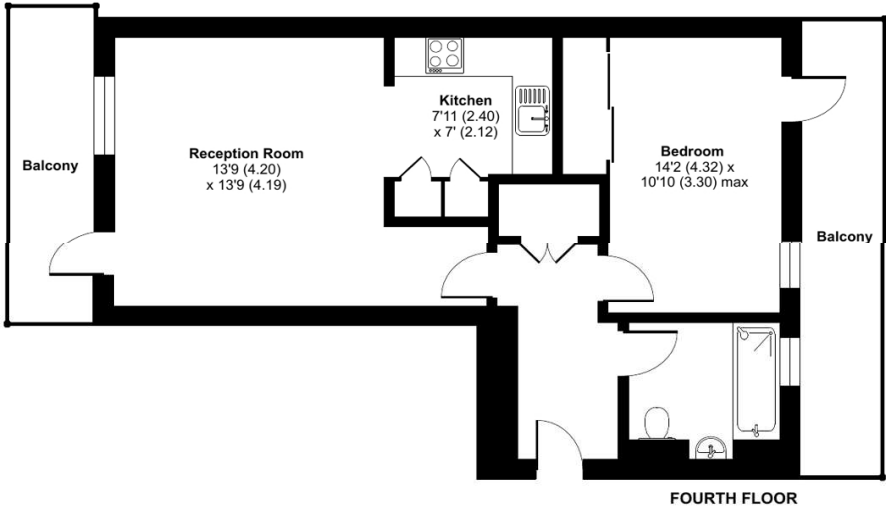


# Orwell Mansions, Bonchurch Road, Notting Hill, W10



## Bonchurch Road, Notting Hill, W10

Approximate Area = 566 sq ft / 52.5 sq m  
For identification only - Not to scale



Score	Energy rating	Current	Potential
92+	A		
81-91	B		
69-80	C	75 C	75 C
55-68	D		
39-54	E		
21-38	F		
1-20	G		

# Orwell Mansions, Bonchurch Road, Notting Hill, W10

## Terms & Conditions:

These particulars are for guidance purposes only and do not form part of an offer or contract.

Asking Price: £550,000

Tenure: Leasehold  
Expires 19/09/3010  
Approximately 985 Years Remaining

Ground Rent: Included in annual Service Charge  
Service Charge: £3,150.84 (per annum)  
for the year 2025 including ground rent.

Anticipated Rent: £2,500.00 pcm  
Approx. 5.5% Yield

## Viewings:

All viewings are by appointment only  
through our Kensington Office.

Our reference: NIN250178

T: 020 7938 3522

E: [kensington.sales@benhams.com](mailto:kensington.sales@benhams.com)

W: [www.benhams.com](http://www.benhams.com)

Disclaimer: These particulars are for guidance purposes only and do not form part of an offer or contract. Whilst care has been taken in their preparation, Benham and Reeves or the vendor shall not be held responsible for any inaccuracies. You should not rely on statements by Benham and Reeves Ltd in the particulars or by word of mouth or in writing as being factually accurate about the property, its condition or its value. Any areas, measurements or distances are approximate. The text, photographs and plans are for guidance only. The photographs appearing in these particulars show only certain parts of the property at the time when the photographs were taken. It should not be assumed that the property has all or any of the necessary planning permission, building regulation consent approval or other required consents for its previous, present or future intended usage. Any intending purchasers must satisfy themselves by inspection or by taking appropriate professional advice. Benham and Reeves Ltd has not rested any of the equipment, fittings or facilities.

London | Canary Wharf | City | Colindale | Dartmouth Park | Ealing | Fulham | Hampstead  
Hammersmith | Highgate | Hyde Park | Kensington | Kew | Knightsbridge | Nine Elms  
Surrey Quays | Shoreditch | Wembley | Wapping | White City | Woolwich

International | China | Hong Kong | India | Israel | Malaysia | Middle East | Pakistan  
Singapore | South Africa | Turkey

