



Rosebery Avenue, Angel, EC1R

Asking Price: £700,000

 Benham
& Reeves

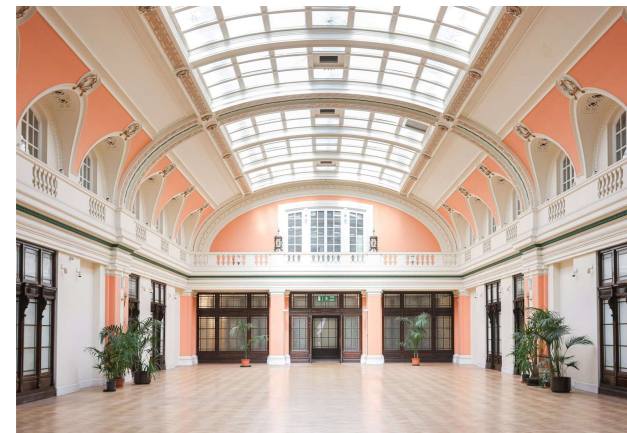
Rosebery Avenue, Angel, EC1R

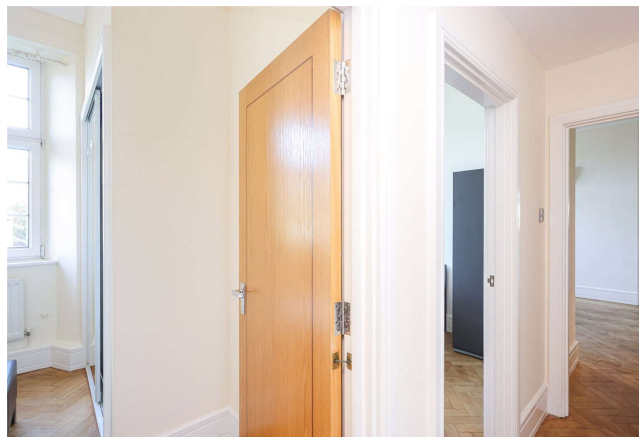
 2 Bedroom (s)  1 Bathroom  Leasehold

Once home to the Metropolitan Water Board, this striking Grade II-listed building dates back to the early 20th century, with elements dating back to as far as 1693. Behind its grand 3-metre-high entrance doors lies a stunning atrium and 24-hour concierge service.

The apartment itself features two well-proportioned double bedrooms, a bright living and dining area, a modern three-piece bathroom, and a fully equipped separate kitchen. Additional benefits include secure, gated parking and access to excellent on-site amenities, including a gym, communal gardens, and the impressive Oak Room, available for private functions.

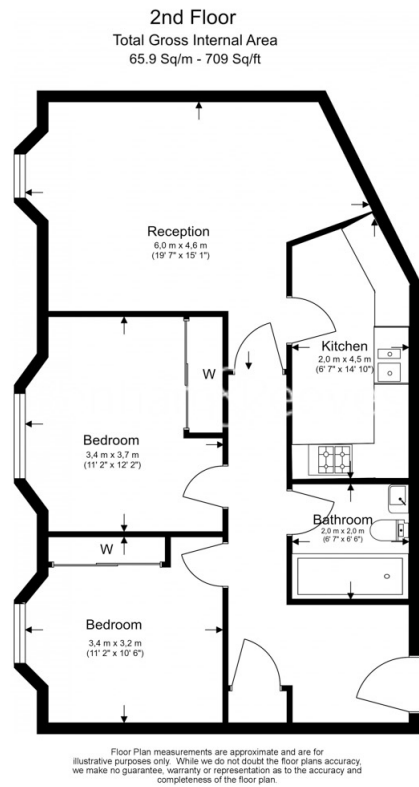
Ideally situated for access to Angel, King's Cross, and Farringdon stations, the property is perfectly placed for commuting across London and beyond. You're also moments from the vibrant scenes of Upper Street, Exmouth Market, and St John Street, offering a rich variety of dining, shopping, and entertainment options. A rare opportunity to own a piece of London's architectural history in a prime central location.





Property Features:

- Two Bedrooms
- One Bathroom
- Prestigious and Historical Development
- Grade II Listed
- Private Parking
- Communal Gardens
- Gymnasium
- Concierge



Score	Energy rating	Current	Potential
92+	A		
81-91	B		
69-80	C	73 C	77 C
55-68	D		
39-54	E		
21-38	F		
1-20	G		

Terms & Conditions:

These particulars are for guidance purposes only and do not form part of an offer or contract.

Asking Price:	£700,000
Tenure:	Leasehold Expires 01/01/2995 Approximately 969 Years Remaining
Ground Rent:	£50.00 (per annum)
Service Charge:	£7,800.00 (per annum)
Anticipated Rent:	£3,100.00 pcm Approx. 5.3% Yield

Viewings:

All viewings are by appointment only through our City Office.

Our reference: CWH220151

T: 020 7213 9700

E: city.sales@benhams.com

W: www.benhams.com

Disclaimer: These particulars are for guidance purposes only and do not form part of an offer or contract. Whilst care has been taken in their preparation, Benham and Reeves or the vendor shall not be held responsible for any inaccuracies. You should not rely on statements by Benham and Reeves Ltd in the particulars or by word of mouth or in writing as being factually accurate about the property, its condition or its value. Any areas, measurements or distances are approximate. The text, photographs and plans are for guidance only. The photographs appearing in these particulars show only certain parts of the property at the time when the photographs were taken. It should not be assumed that the property has all or any of the necessary planning permission, building regulation consent approval or other required consents for its previous, present or future intended usage. Any intending purchasers must satisfy themselves by inspection or by taking appropriate professional advice. Benham and Reeves Ltd has not rested any of the equipment, fittings or facilities.

London | Canary Wharf | City | Colindale | Dartmouth Park | Ealing | Fulham | Hampstead
Hammersmith | Highgate | Hyde Park | Kensington | Kew | Knightsbridge | Nine Elms
Surrey Quays | Shoreditch | Wembley | Wapping | White City | Woolwich

International | China | Hong Kong | India | Israel | Malaysia | Middle East | Pakistan
Singapore | South Africa | Turkey

